



Community Advisory Group Meeting

Cultural Resources Update

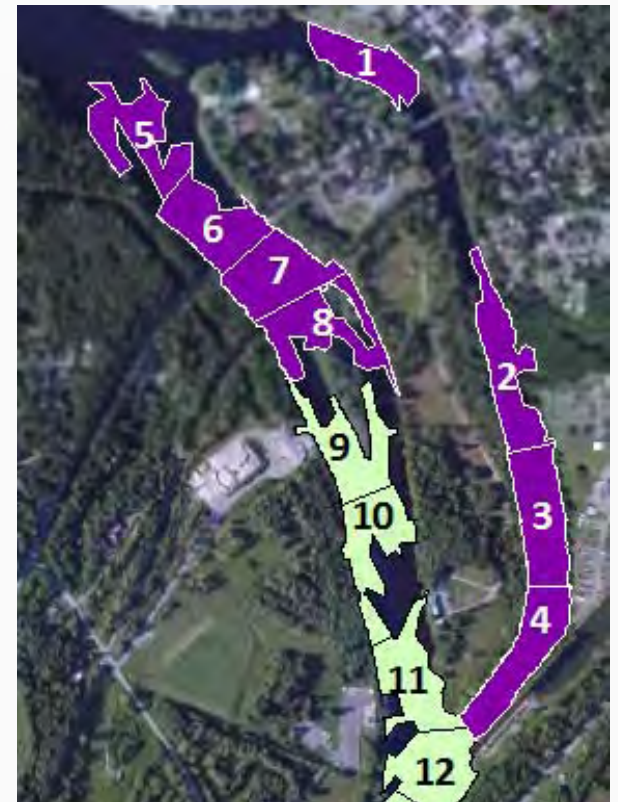
March 22, 2012

Program Overview



2009 Phase 1 Areas (Rogers Island Area)

- Investigations performed in 2007 to 2009
- Terrestrial (Artifacts Belong to Property Owner)
 - Rogers Estate (Processing Facility Area)
 - **Fort Edward (Timbers encountered / project adjustment / preservation)**
- In – River (Artifacts Belong to NYS)
 - Extensive work on Vessel U-2
 - Various other work vessels
 - Artifact scatter collection
 - Unanticipated discoveries (e.g., propeller)
- **Memorandum of Agreement (MOA) work tasks are underway**



Program Overview (cont.)



2011 Phase 2 Year 1 (CUs 9 to 25)

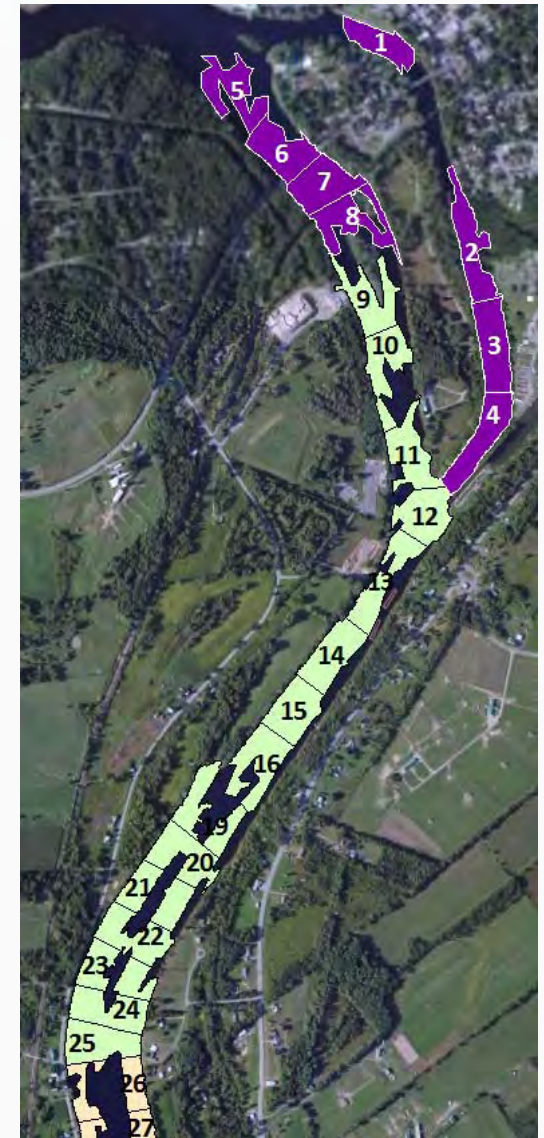
- Investigations performed in 2010 and 2011
- Some areas originally evaluated during Phase 1

• Terrestrial

- Cribbing and other historic canal features
- Pre-contact / Native American sites

• In - River

- Various vessels in West Channel Rogers Island
- **Several unanticipated discoveries**
 - Barrel buoy, two anchors, rudder, etc.



Program Overview (cont.)



2012 Phase 2 Year 2 (CU 26 to Griffin Island Area)

– Investigations performed in 2011

• Terrestrial

– Historic canal features (e.g., pilings)

– Pre-contact /Native American Sites

• In - River

– Historic canal features (e.g., training dike)



Program Overview (cont.)

Future Work Considerations

- Complete studies / investigations at least one year ahead of dredging
 - Land-Locked section presents challenges
- Document unanticipated discoveries
- Consult with NYS (DEC and SHPO), NPS and others
- Continue consulting parties meetings
- Oversight of GE's work by EPA (with support from NYS, E & E and LCMM)



Program Overview (cont.)

Future Work Considerations (cont.)

- Continue to consult with State Museum regarding artifacts and discoveries
- Evaluate artifacts based on historic context and condition due to PCBs
- Opportunities may arise for education and display of project-related items
- Supplement MOA as needed for Phase 2 areas



Cultural Resources



Floodplains

- Interim Response Action Properties
 - Cultural resource assessments completed by EPA
- Coordination with other agencies including NYS and NPS
- Evaluations will continue through remedial process



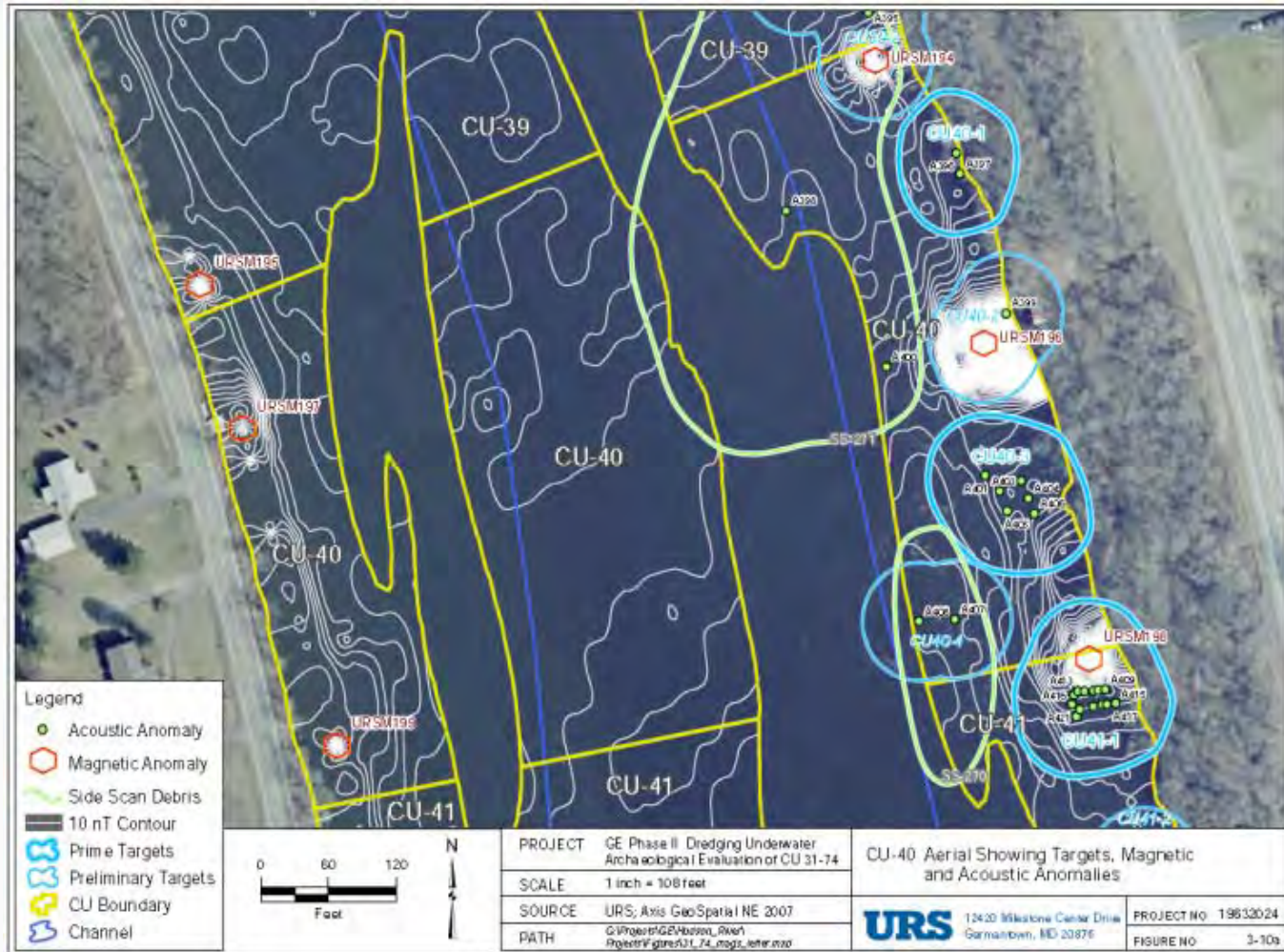
2011 Investigations



- Assessment of underwater remote sensing targets in CUs 19 – 60
 - Evaluated remote sensing data to identify follow-up targets
 - Consisted of magnetometer and bathymetric data to identify potential targets
 - Performed “in-the-field” verification of follow-up targets
 - Underwater camera surveys
 - Wading surveys / diving surveys in select locations
 - Reviewed Unanticipated Dredge Finds
- Terrestrial archaeological survey of shoreline in Land-Locked section and a portion of the Fort Miller Dam area



Remote Sensing Data

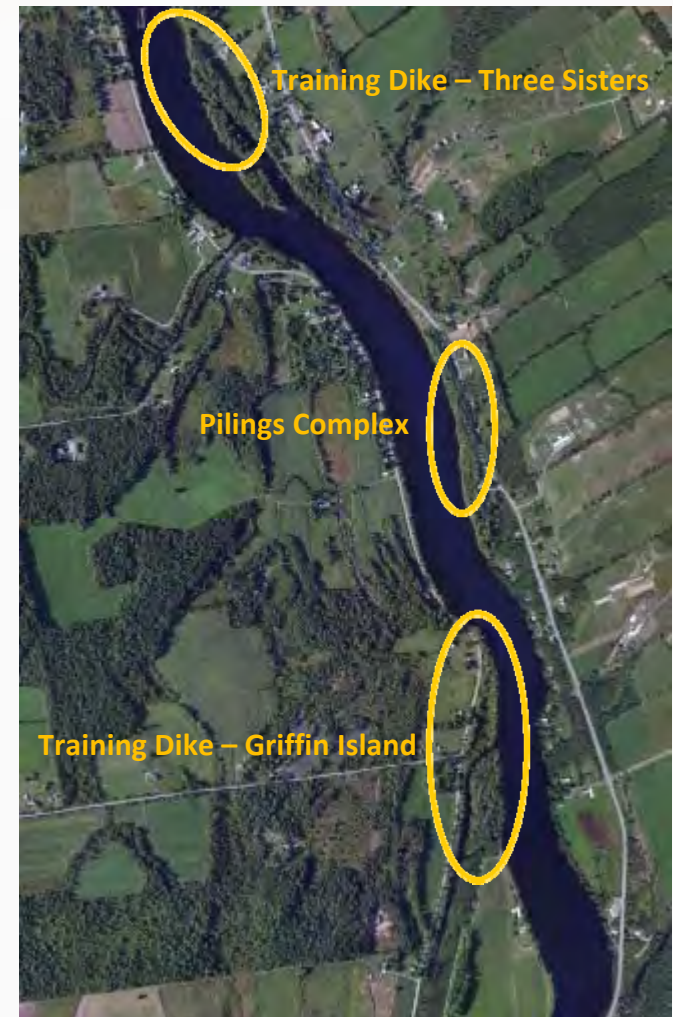


Note: Targets in "blue" circles later identified as piling complex feature

2011 Results



- Fieldwork conducted in July and October
- No significant targets found in CUs 19-30
- Three locations with potentially significant submerged resources identified in CUs 31-60
 - Linear dike features at Three Sisters Islands (CUs 31-33) and Griffin Island (CUs 46-47)
 - Piling complex on eastern shoreline in CUs 40-42



2011 Results (cont.)



Training Dike at Three Sisters Islands



Training Dike at Griffin Island



Both built circa 1908 as part of Barge Canal project and will not be disturbed during dredging

2011 Unanticipated Discoveries



Folding Anchor



Rudder



Grappling Anchor



Barrel Buoy

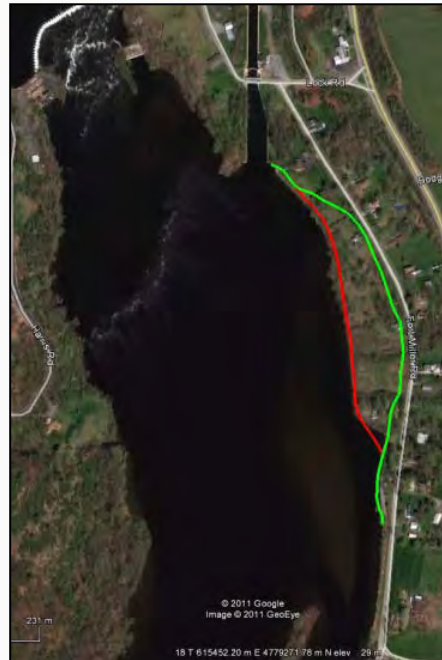
2012 Investigations



- Investigation of underwater remote sensing targets in the Land-Locked section and the Upper Portion of the Fort Miller Dam section below Lock 6
- Completion of terrestrial archaeological survey of shoreline areas in the Land-Locked section



2012 Investigations (cont.)



Continued investigation of area south of Lock 6 from barge canal
Construction Maps

Fort Edward Timbers



- Currently in 40% solution of PEG 400
 - 30% and 40% increments stretched out due to buoyancy and difficulties with chemical supply (now resolved)
- Test Timber (T5) gained 4.5 lbs
- 50% increment to be added in late April/early May
- Timbers to be removed from PEG 400 solution in mid-summer
- 50% PEG 3350 solution will be used to consolidate surface wood
- Timbers will be allowed to dry slowly in humidity controlled environment
- Preservation will be complete by late summer



Phase 1 MOA Tasks



Rogers Island Historic Riverine, Industrial, and Transportation District

- Majority of known sources examined
- On-site research at the Fort Edward Historical Association
- Scanning and review of images of shipbuilding activities at Holler Davis Flood Company
- Gathering of images and maps to outline district underway
- Evaluation and summary of archaeological resources underway



Phase 1 MOA Tasks (cont.)



Fort Edward Canal Infrastructure Survey

- Available maps and other historic resources used to create base map showing potential locations of historic canal features in the Village of Fort Edward
- In November and December 2011, LCMM photo-documented canal infrastructure remains in the Village of Fort Edward
- LCMM current compiling technical report on the study



Phase 1 MOA Tasks (cont.)



Phase 1 MOA Tasks (cont.)



1819 Double Lock
Site 42 (facing south east)



Feeder Sluiceway
Site 22A (facing north)

Phase 1 MOA Tasks (cont.)



Barge Canal / Old Champlain Canal Junction Lock
Site 1A (facing north)



Aqueduct over Little Wood Creek with field crew
Site 5A (facing north east)

Phase 1 MOA Tasks (cont.)



Possible wharf / pier
Site 39 (facing south west)



1858 Double Lock
Site 21 (facing north)



David King – Project Director
Gary Klawinski – Project Manager
Larisa Romanowski – Community Involvement Coordinator

Hudson River Field Office: (518) 747-4389

www.epa.gov/hudson

www.hudsonredgingdata.com

www.hudsoncag.ene.com

GE's Hudson River Team: 1-888-596-3655

www.hudsonredging.com